

# Water Supply

## *Groundwater, Streams & Imported Water*



MARK KRAUSE, GENERAL MANAGER  
DESERT WATER AGENCY  
FEBRUARY 9, 2023



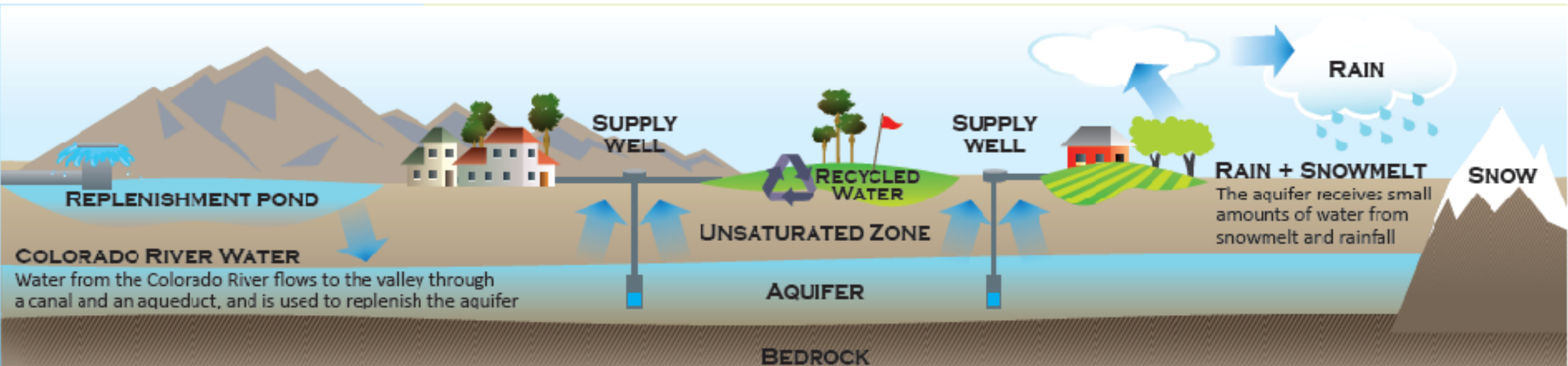
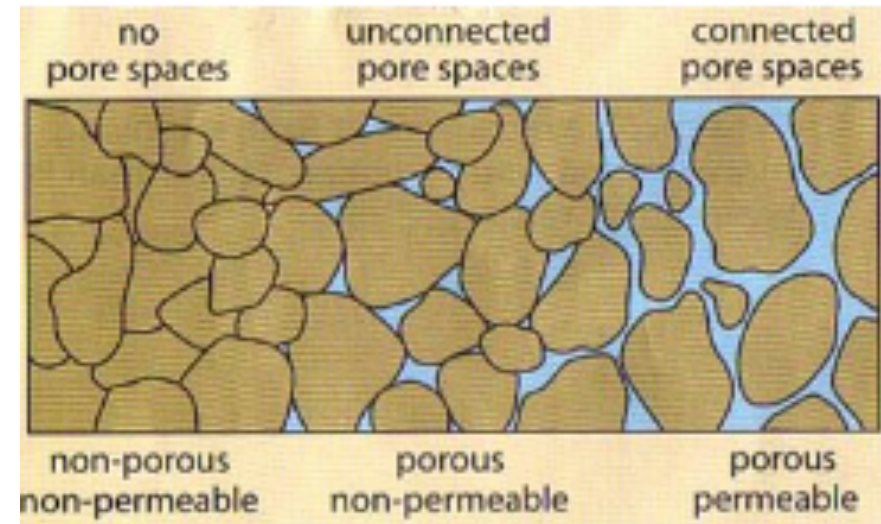
# Streams

- Chino Creek, Falls Creek, Snow Creek, Whitewater River
- 5 % of DWA water supply
- Less than 1% of supply valley wide



# Aquifer

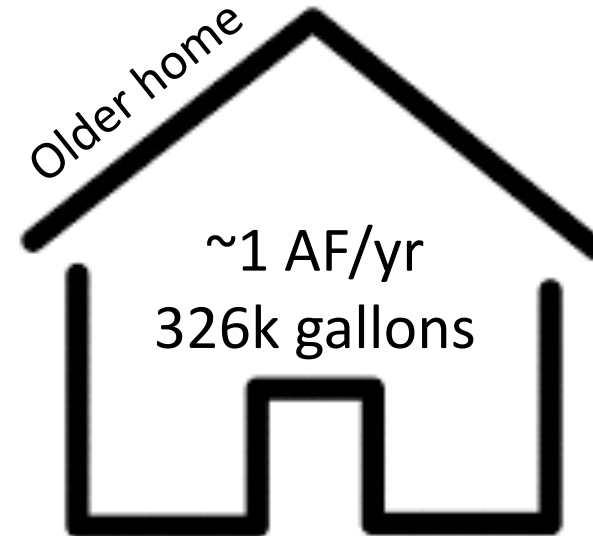
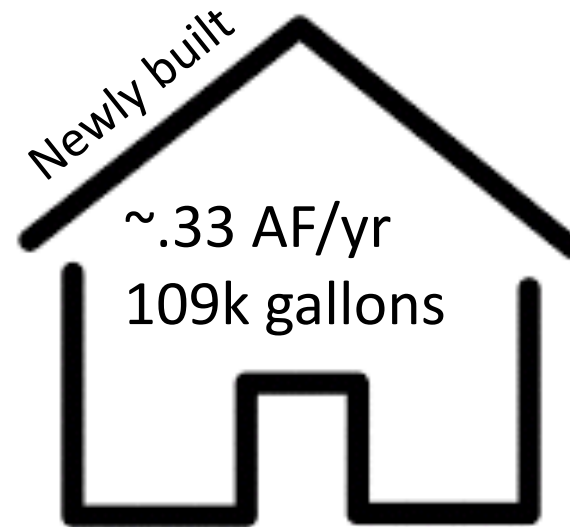
- >34.8 million acre feet stored (MAF) in first 1000 ft
- 39.9 MAF storage capacity in first 1000 ft
- Each year valley uses about .3 MAF of groundwater
- About 130 years worth of water
- Depth to water varies



# Acre foot



325,851  
gallons



# Subbasin map



## Groundwater Basins in Coachella Valley

	Desert Hot Springs	2.5 MAF
	Garnet Hill	1 MAF
	Indio/Whitewater River	28.8 MAF
	Mission Creek	2.5 MAF



# State Water Contractor

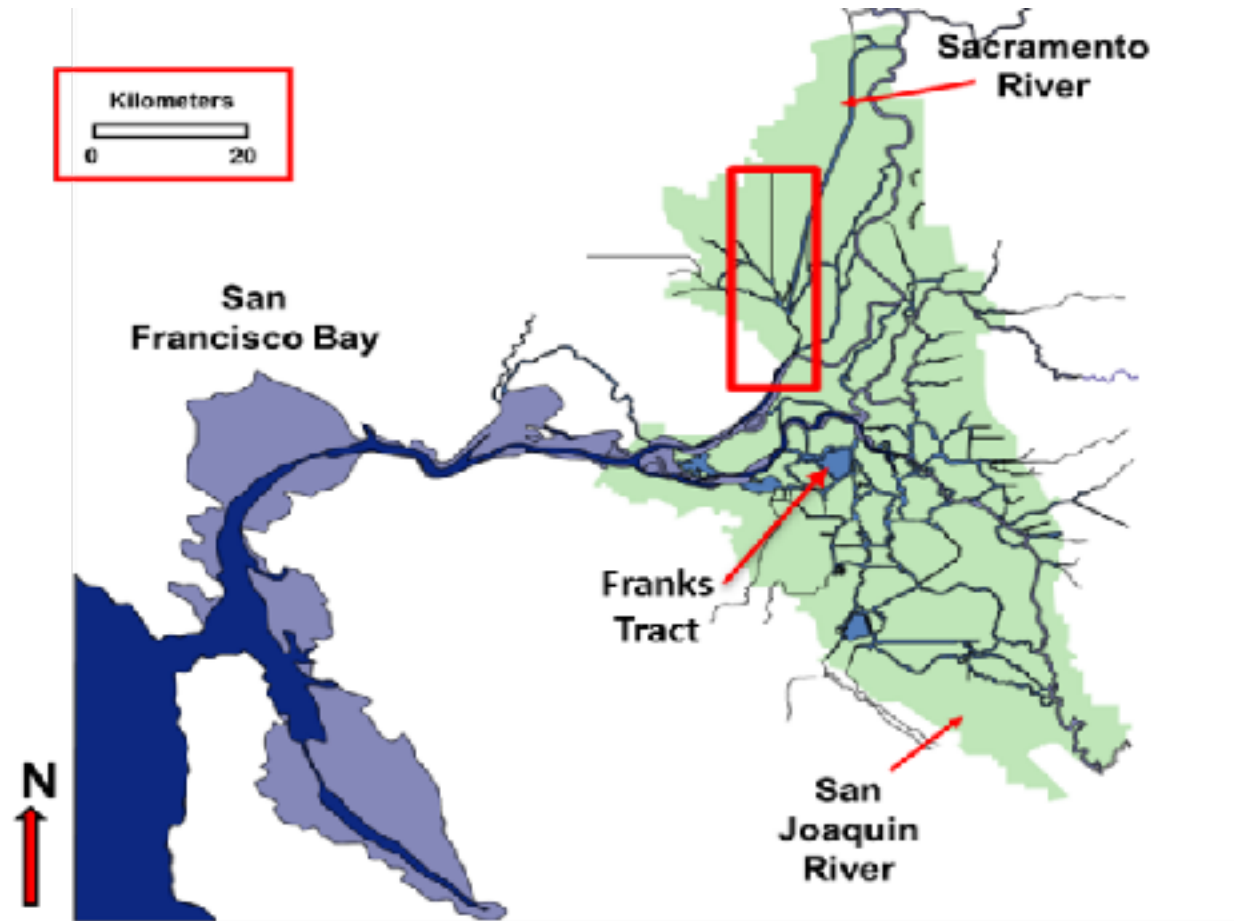


- Two of 29 in the state
- That's why DWA was formed back in 1961
- Work with DWR to maintain statewide system
- Pay to import water

# Sierra Nevada



# The Delta





# The Delta



- More than 30 million acre feet flow through each year
- About half the total river flow in the state passes through this region
- Supplies an estimated 7 million acre feet of water per year to approximately 23 million people



# Regulations

**DELTA SMELT NEAR EXTINCTION**



# Earthquakes

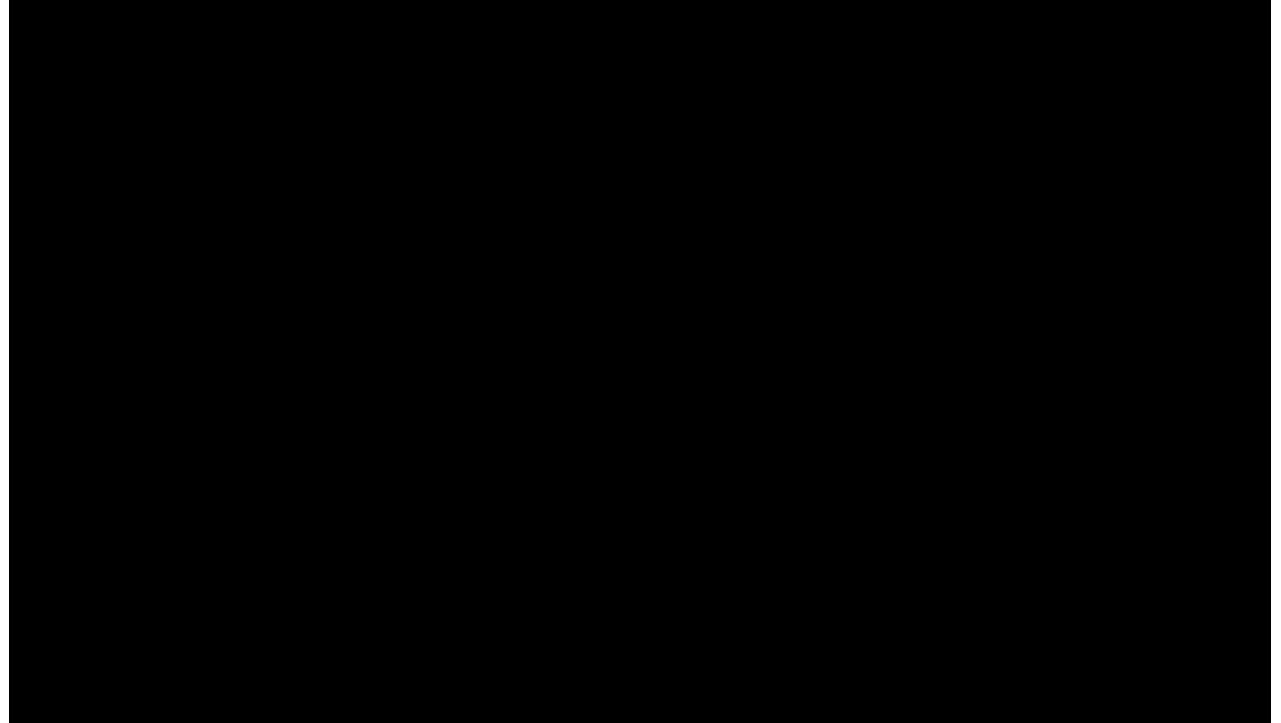


# Earthquakes

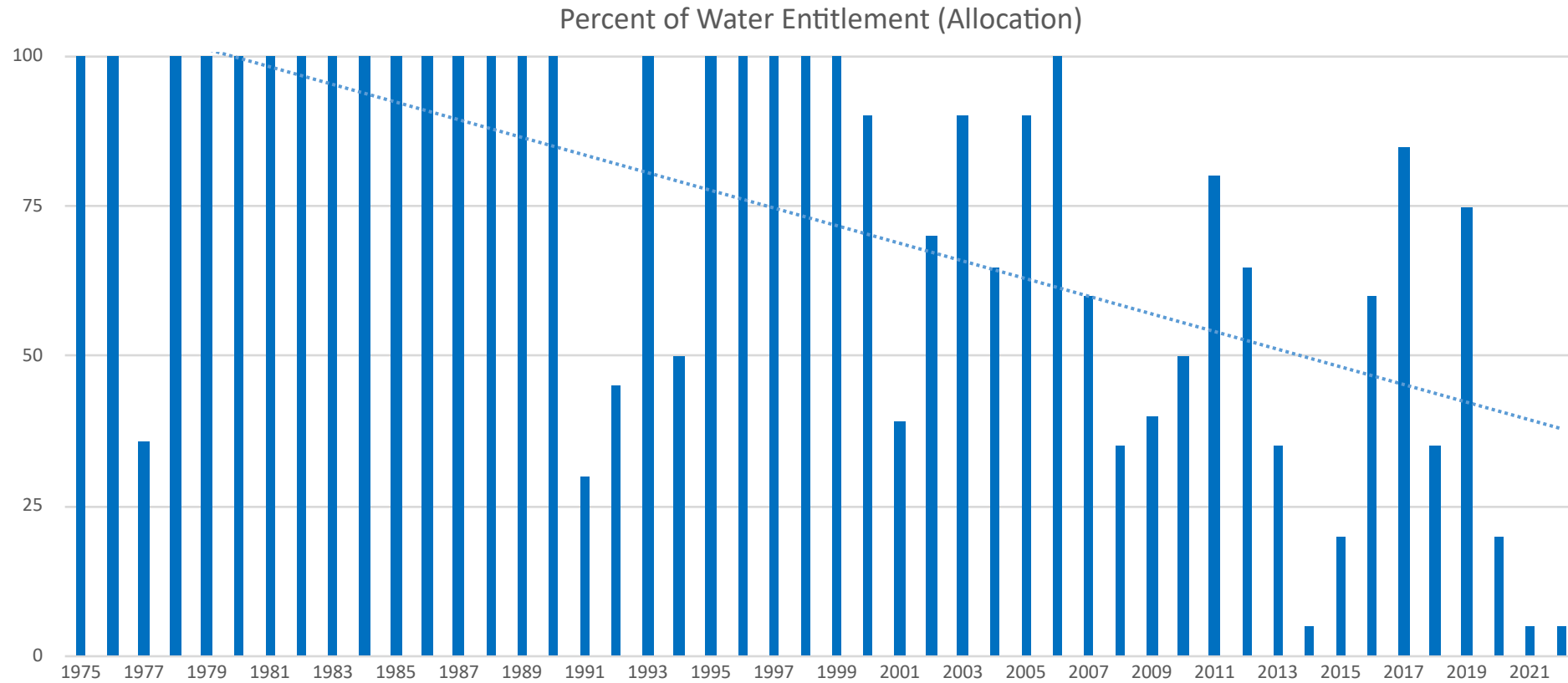
**Typical water flow**  
snowmelt/  
reservoir releases



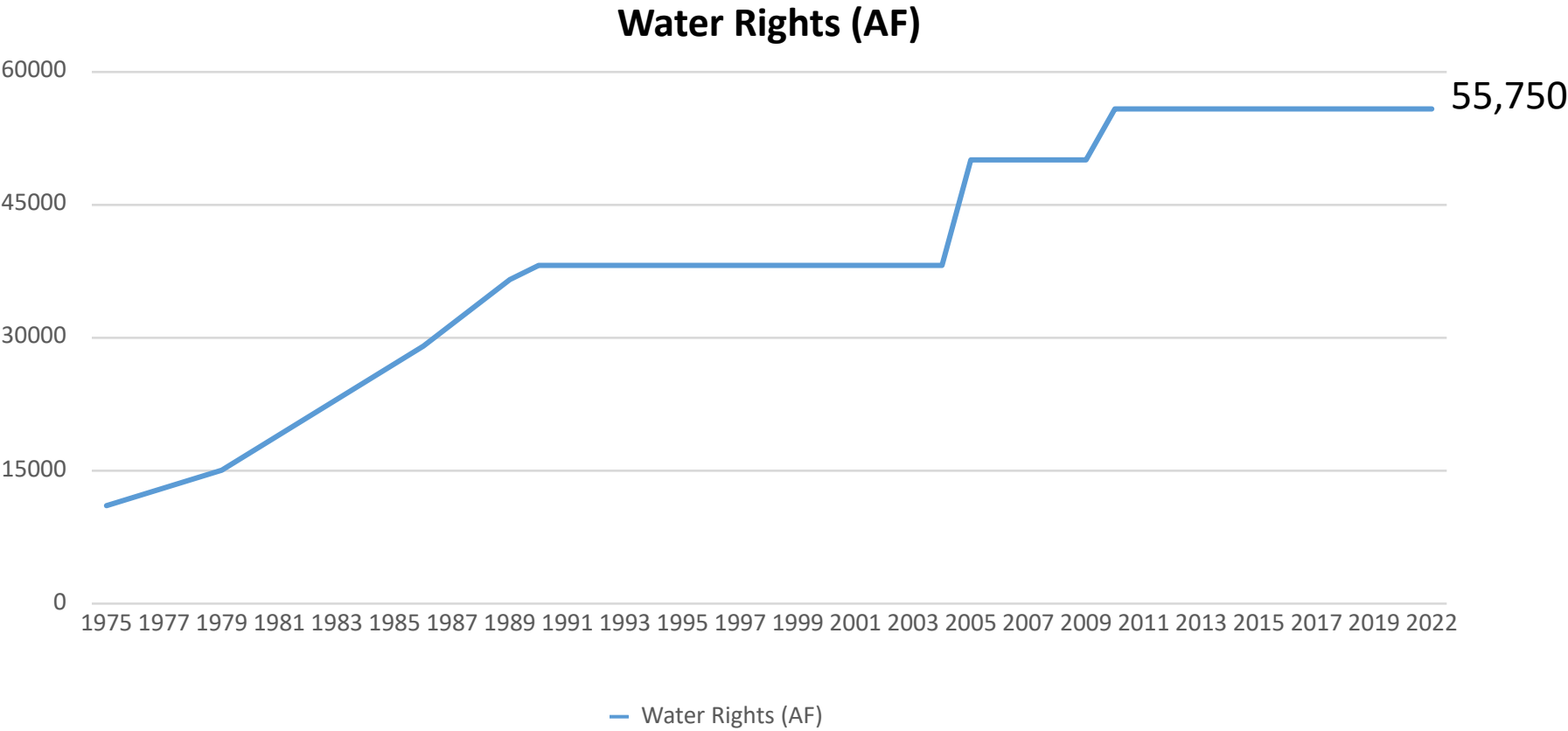
**Earthquake**  
ocean



# State Water Project reliability



# DWA State Water Project imports





# Sites Reservoir

## Flexible Storage Solution

- Does not rely on Snow Pack
- Is adaptable to future climate change
- Fills during more frequent flooding events
- Is ideal for dry year water supply
- Increases flexibility of other California Reservoir operations and potentially increases overall water supply for domestic and irrigation purposes



DESERT WATER





# SoCal end point

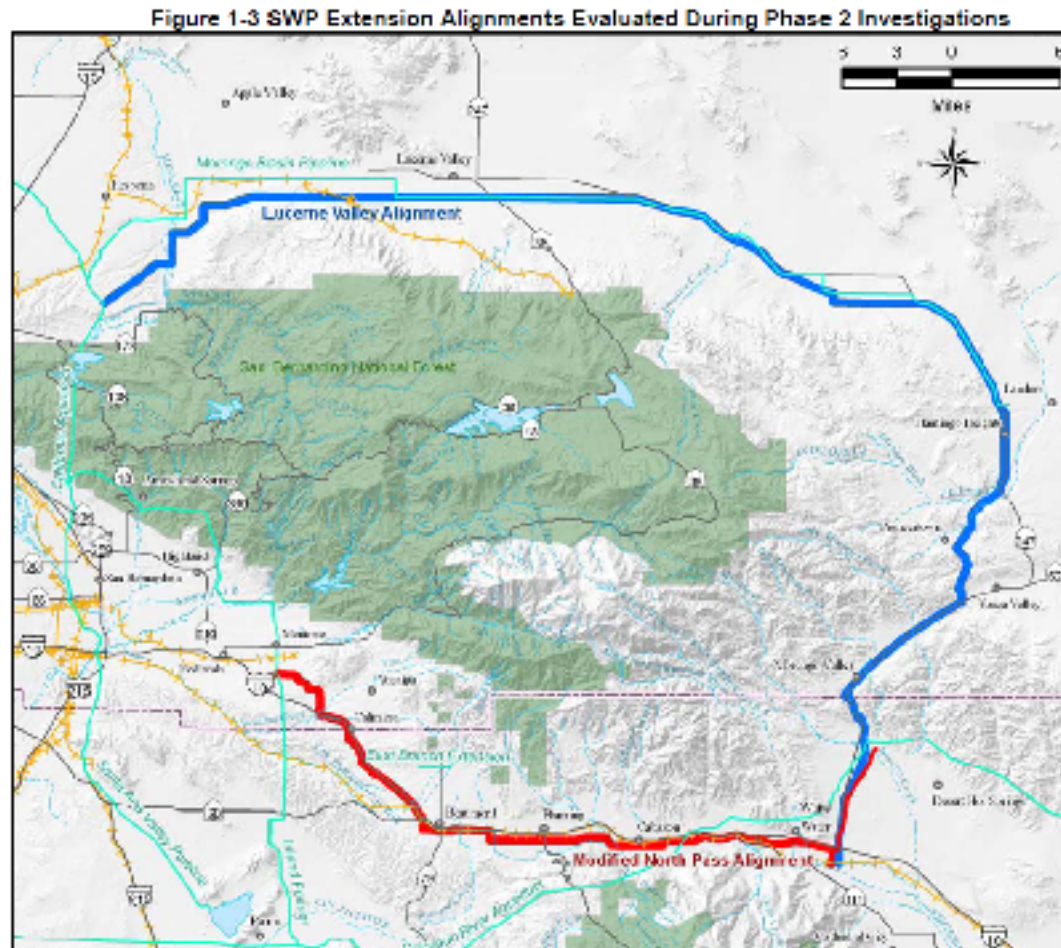
- Ends at Lake Perris
- Furthest east extension in Beaumont



Click on the facility name to see a detailed map.



# Possible routes to valley



- Two routes
  - Lucerne Valley
    - 88 miles
  - San Gorgonio Pass
    - 38 miles
- Would cost about \$1.6B (not adjusted for inflation)



# MWD exchange



- Trade Colorado River water for State water
- Avoid building +\$1.6B pipeline
- Saves ratepayer money
- Guaranteed delivery
- Get advanced deliveries to help groundwater levels



# Colorado River



- Trade Colorado River water for State water
- Avoid building +\$1.6B pipeline
- Saves ratepayer money
- Get advanced deliveries to help groundwater levels



# Water replenishment

- Two west valley facilities for SWP
- One mid-valley location
- One east valley location



# Whitewater Hydro



# Whitewater River



# Whitewater River





# Whitewater Groundwater Replenishment Facility



# Mission Creek Groundwater Replenishment Facility



# Thank you!

Mark Krause  
[mkrause@dwa.org](mailto:mkrause@dwa.org)  
760-323-4971