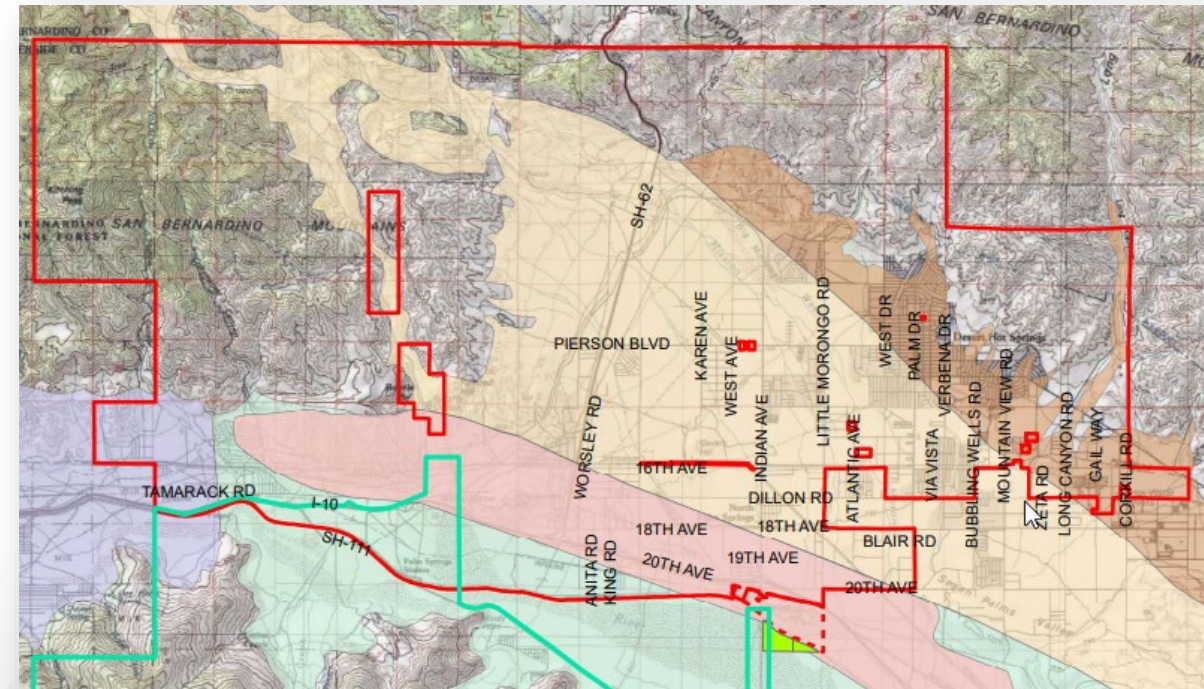


Mission Springs Water District

March 3, 2022

Who is MSWD?

- Founded in 1953
- Service area includes: City of Desert Hot Springs, unincorporated Riverside County areas, North Palm Springs and portions of the Whitewater area
 - *Approx. 14,000 customers, with a service population of more than 44,000*
- Responsible for water and sewer
- County Water District
- Public agency: not-for-profit



Board of Directors

- Governed by a five-member body elected from the community



Randy Duncan
Board Member



Steve Grasha
Board Member



Ivan Sewell
Board Member



Russ Martin
President



Nancy Wright
Vice President

History Video

<https://youtu.be/EeoDzLB6ENo>

Our Mission

Provide, protect, preserve our
most valuable resource... water.

135-square-mile service area

1.25 MILLION FEET
of pipelines

13 Active Wells
for potable water

Groundwater
Aquifer

24 Booster Pumps
14 PRESSURE ZONES

Aeration Basins

Clarifiers

Spreading Ponds

24 Reservoirs

22.5 MILLION GALLONS
of storage/reservoir capacity

Alan L. Horton
Wastewater Treatment Plant
2 MILLION GALLONS
of wastewater capacity per day

Value of Water Video

<https://youtu.be/4lDqiztG61Y>

Value of Sewer Video

<https://youtu.be/Knpgm8SZqQs>

Berkeley Springs Water Awards



Regional Water Reclamation Facility

Building for the future.

COMING IN 2023: Mission
Springs Water District Regional
Water Reclamation Facility



Website & Customer Connect Portal

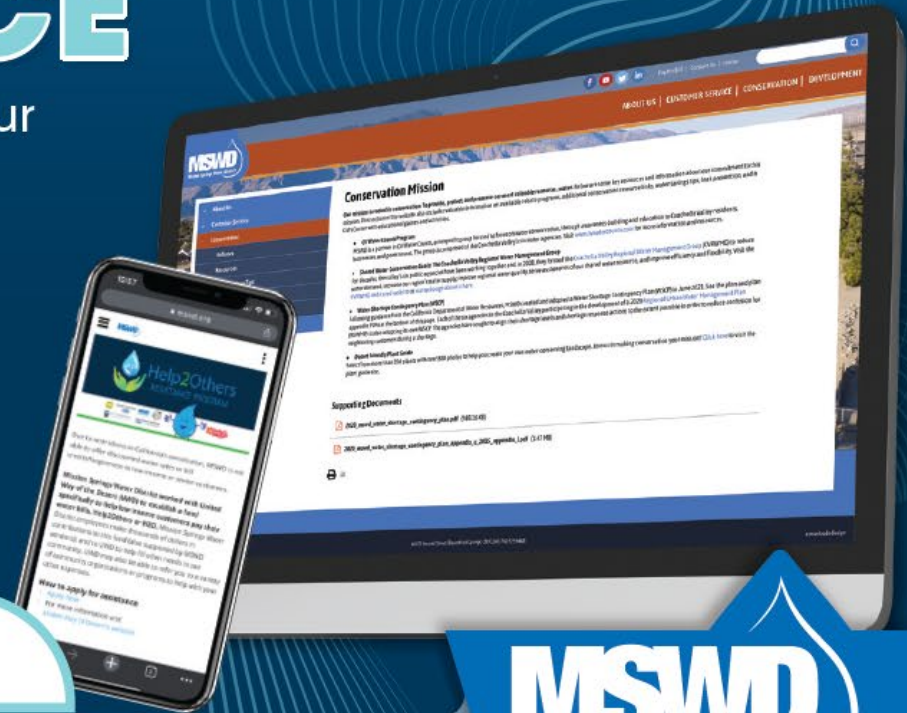
NEW WEBSITE OFFERS CONVENIENCE

Check out our redesigned website at www.MSWD.org to access your account 24/7 and learn more about your water service.

The new design offers customers:

- ✓ Mobile responsiveness
- ✓ Improved navigation
- ✓ Instant access anywhere
- ✓ And much more

Sign up today to better understand your water use and **receive custom conservation tips!**



MSWD
Mission Springs Water District

Visit us at MSWD.org or Facebook.com/MissionSpringsWaterDistrict



Thank you!

www.MSWD.org

www.CVWaterCounts.com



Marion Champion
Programs & Public Affairs Manager
mchampion@mswd.org
760-329-6448, ext. 145