

Water Supply

Groundwater, Streams & Imported Water



MARK KRAUSE, GENERAL MANAGER
DESERT WATER AGENCY
FEBRUARY 10, 2022



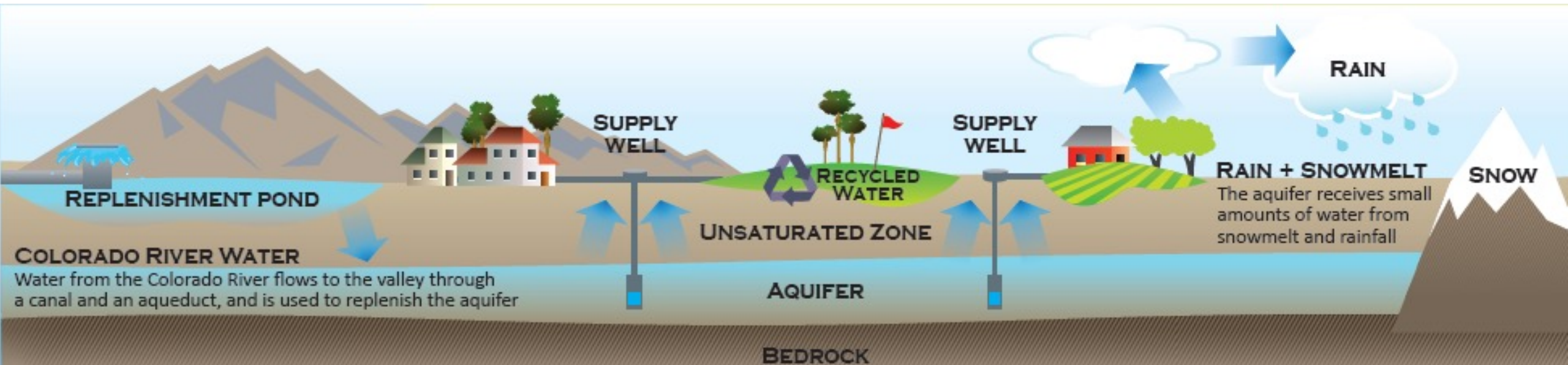
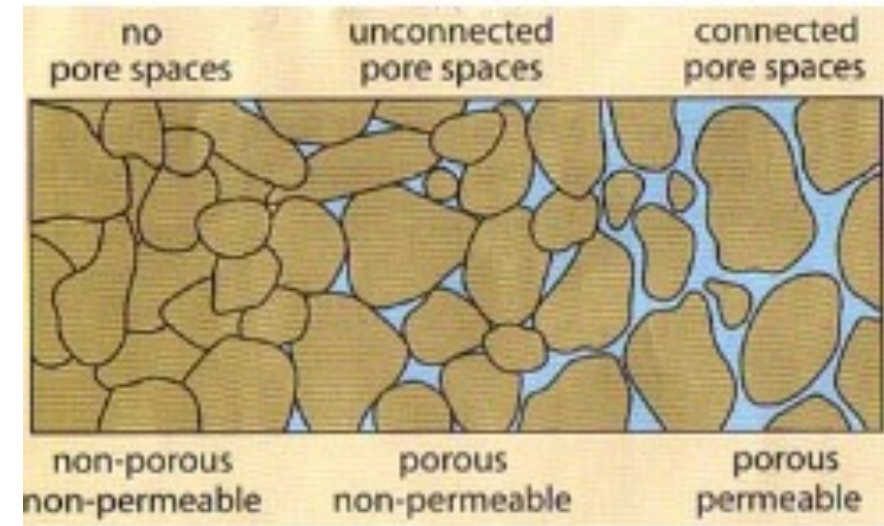
Streams

- Chino Creek, Falls Creek, Snow Creek, Whitewater River
- Less than 1% of supply valley wide



Aquifer

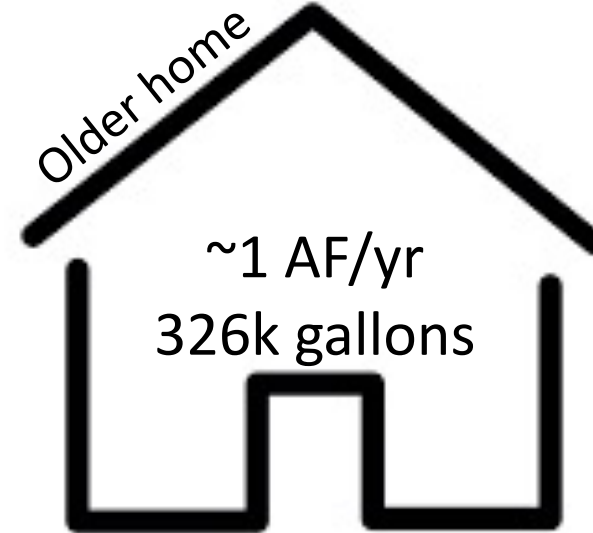
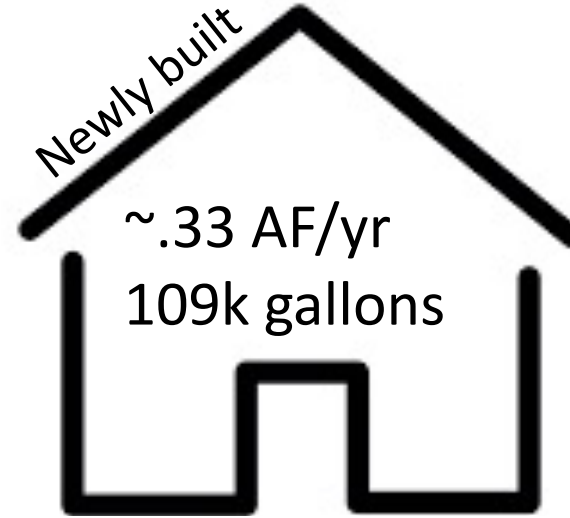
- >34.8 million acre feet stored (MAF) in first 1000 ft
- 39.9 MAF storage capacity in first 1000 ft
- Each year valley uses about .3 MAF of groundwater
- About 130 years worth of water
- Depth to water varies



Acre foot



325,851
gallons



Subbasin map



Groundwater Basins in Coachella Valley

	Desert Hot Springs	2.5 MAF
	Garnet Hill	1 MAF
	Indio/Whitewater River	28.8 MAF
	Mission Creek	2.5 MAF



State Water Contractor



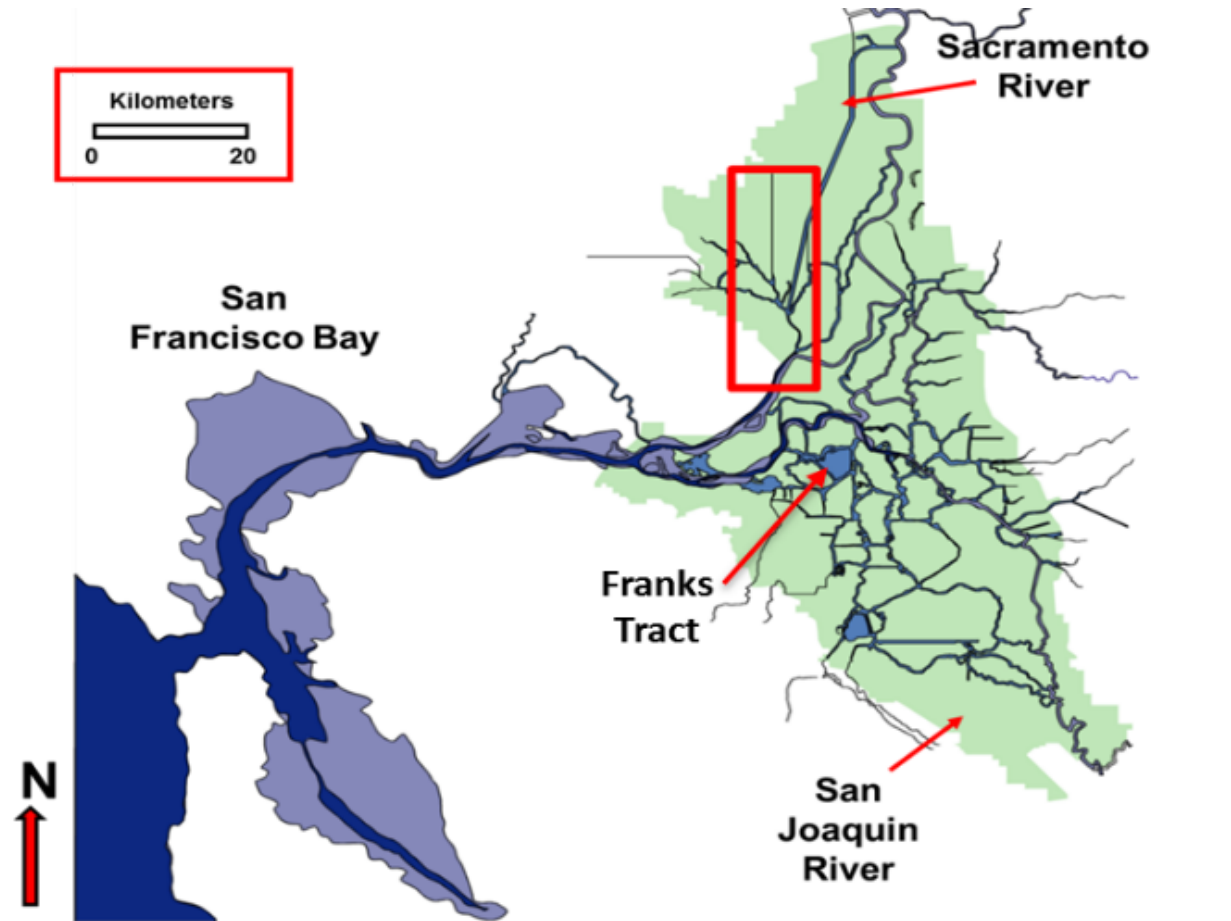
- Two of 29 in the state
- That's why DWA was formed back in 1961
- Work with DWR to maintain statewide system
- Pay to import water



Sierra Nevada



The Delta



The Delta



- More than 30 million acre feet flow through each year
- About half the total river flow in the state passes through this region
- Supplies an estimated 7 million acre feet of water per year to approximately 23 million people



Regulations

DELTA SMELT NEAR EXTINCTION

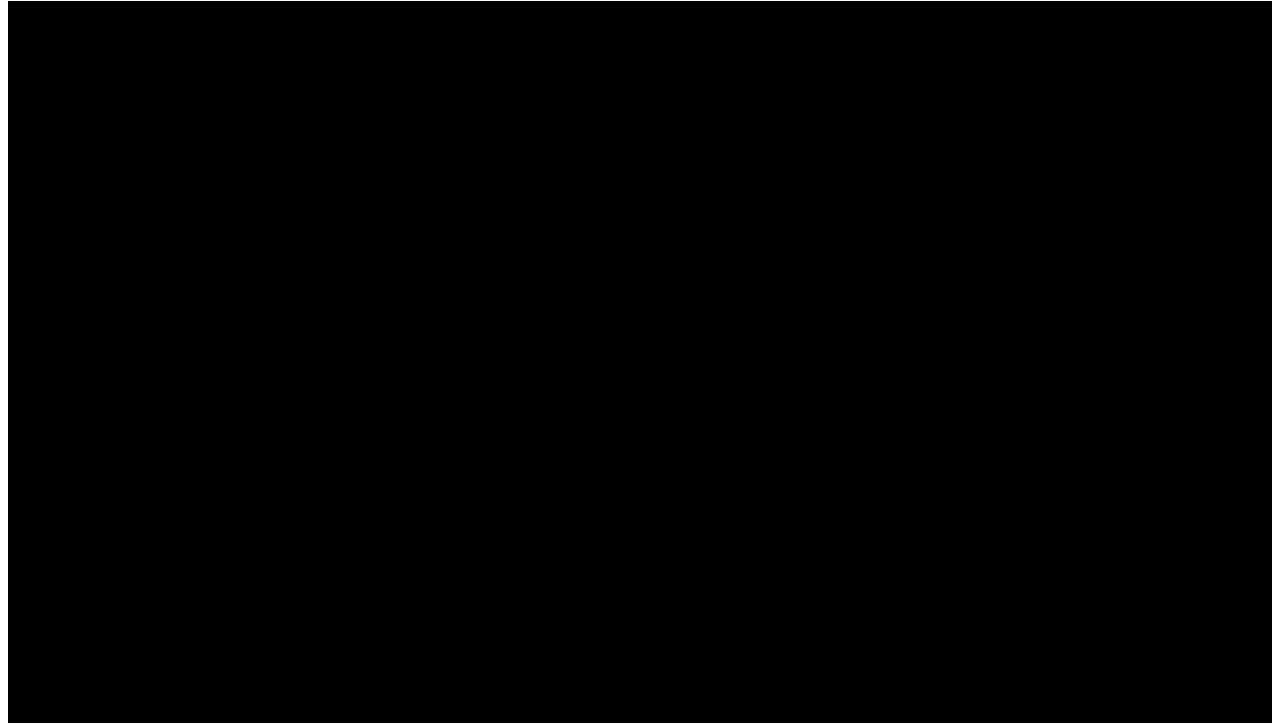


Earthquakes

Typical water flow
snowmelt/
reservoir releases



Earthquake
ocean

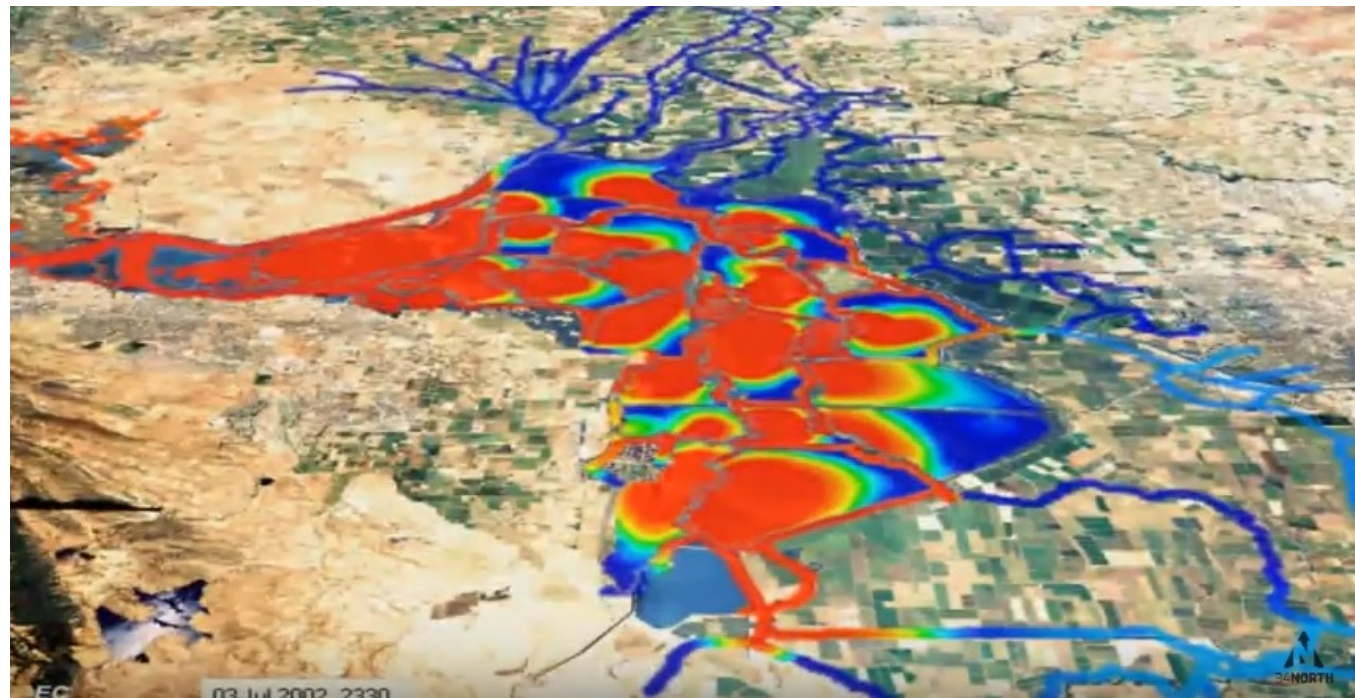


Earthquakes





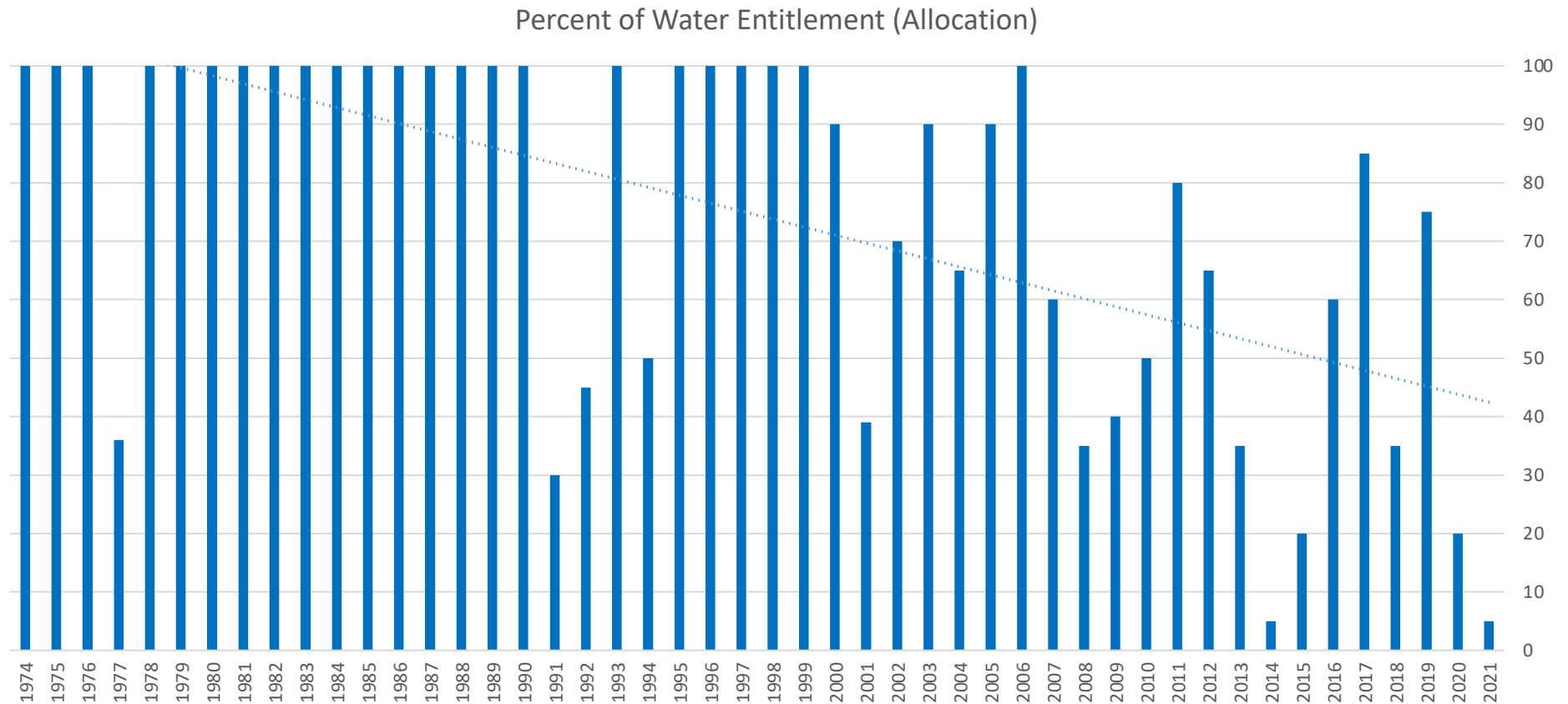
Before



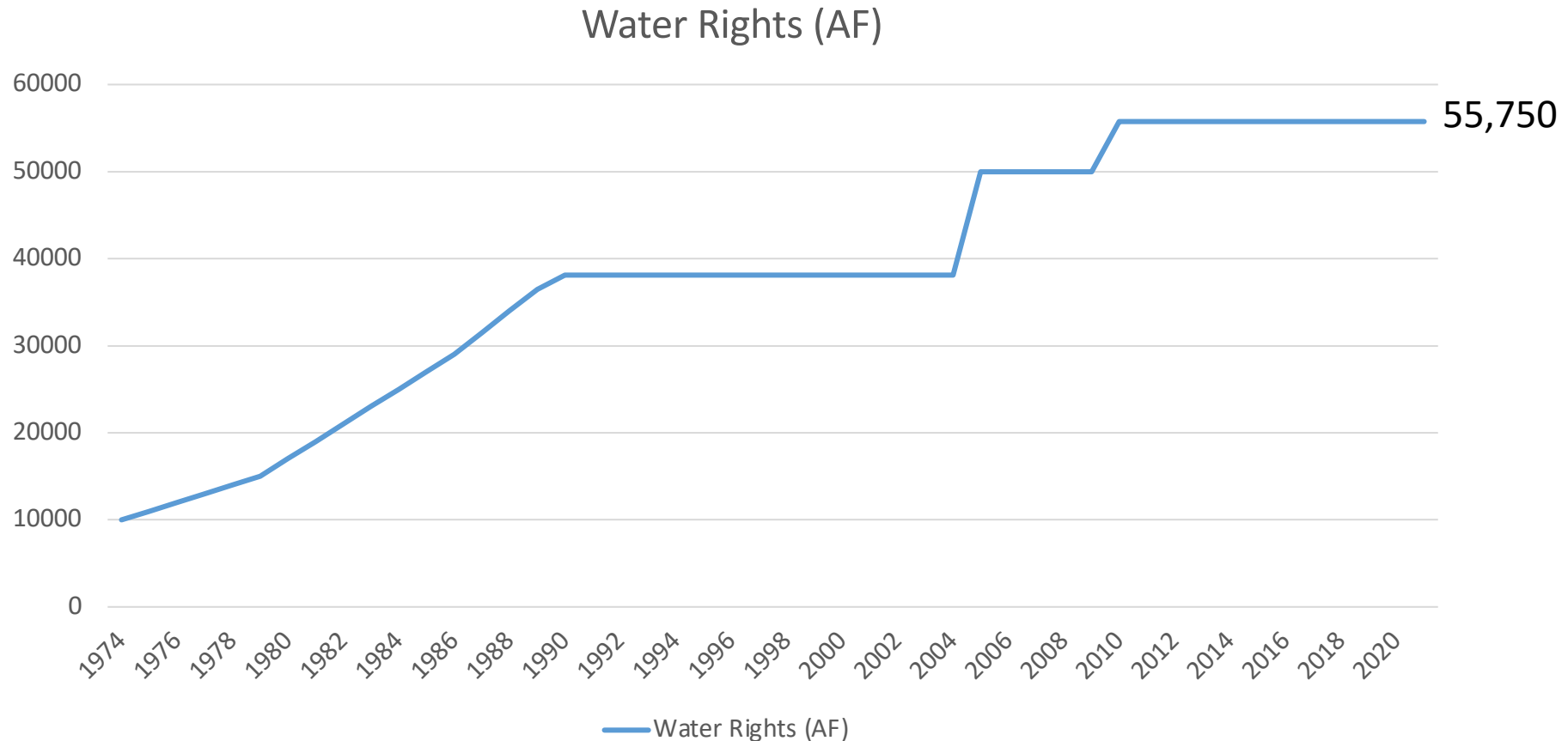
After

EC 03 Jul 2002 2330

State Water Project reliability

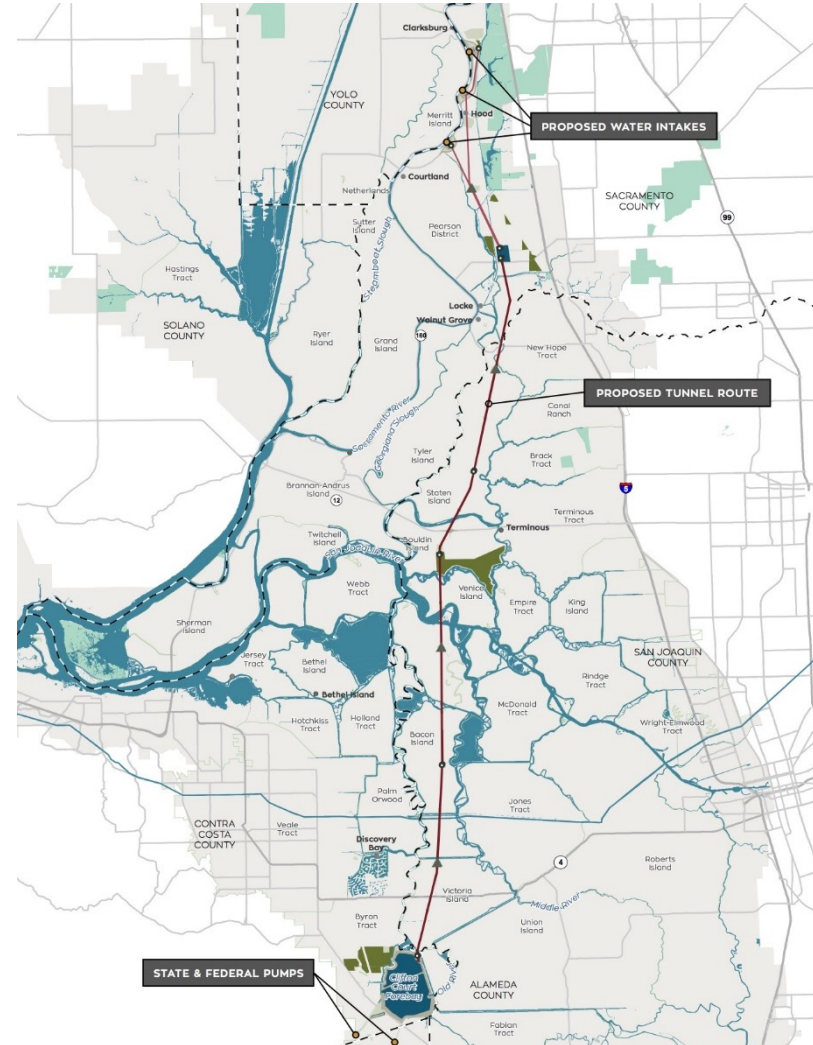


DWA State Water Project imports



Delta Conveyance Project

- Single tunnel
- Increase reliability and deliveries
- Less vulnerable to quakes
- Won't be completed for decades
- Still pending – Environmental Permitting



Sites Reservoir

Flexible Storage Solution

- Does not rely on Snow Pack
- Is adaptable to future climate change
- Fills during more frequent flooding events
- Is ideal for dry year water supply
- Increases flexibility of other California Reservoir operations and potentially increases overall water supply for domestic and irrigation purposes



SoCal end point

- Ends at Lake Perris
- Furthest east extension in Beaumont

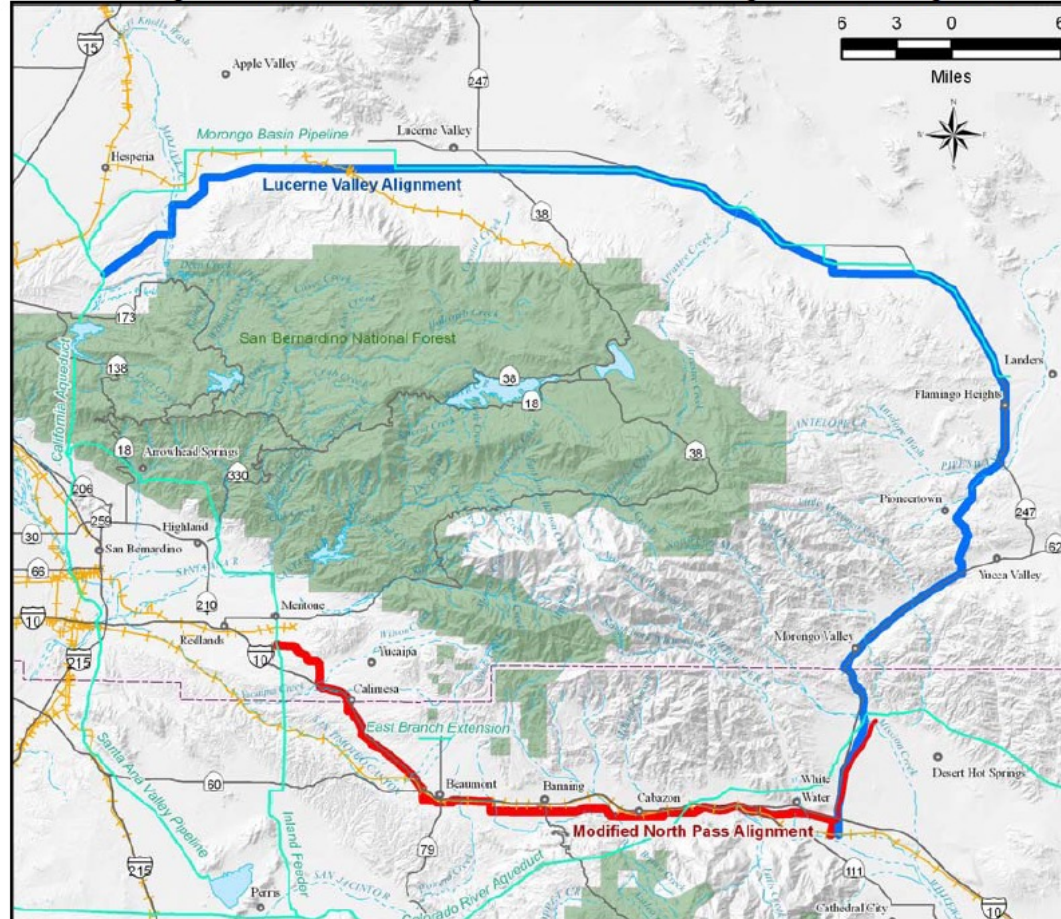


Click on the facility name
to see a detailed map.



Possible routes to valley

Figure 1-3 SWP Extension Alignments Evaluated During Phase 2 Investigations



- Two routes
 - Lucerne Valley
 - 88 miles
 - San Geronio Pass
 - 38 miles
- Would cost about \$1.6B



MWD exchange



- Trade Colorado River water for State water
- Avoid building +\$1.6B pipeline
- Saves ratepayer money
- Guaranteed delivery
- Get advanced deliveries to help groundwater levels



Colorado River



- Trade Colorado River water for State water
- Avoid building +\$1.6B pipeline
- Saves ratepayer money
- Get advanced deliveries to help groundwater levels



Water replenishment



- Two west valley facilities for SWP
- One mid-valley location
- One east valley location



Whitewater Hydro



Whitewater River



Whitewater River



Whitewater Groundwater Replenishment Facility



Mission Creek Groundwater Replenishment Facility



Thank you!

Mark Krause
mkrause@dwa.org
760-323-4971

