



# Agricultural Water Use in the Coachella Valley

**Peter Nelson**  
CVWD Board Director

February 18, 2020





# An Agricultural Economy

- Coachella Valley's agricultural industry is the second largest contributor to the local economy.
- It employs approximately 12,000 people and produces nearly a billion dollars in agricultural products each year.



# Top producing crops

- Dates
- Bell Pepper
- Lettuce
- Grapes
- Artichokes
- Broccoli
- Watermelon
- Citrus
- Carrots

# The size of agriculture

- CVWD's total acreage is 137,416
  - About 76,000 irrigable acres
  - About 53,637 is commercially farmed
  - Almost 8,500 is multicropped



# Coachella Canal

- Farmers use either groundwater or surface water from the Coachella Canal
- Delivers about 250,000 acre feet of water a year
- About 2/3 of local farmland is irrigated with canal water



# Coachella Canal



- Begins at Colorado River
- Branch of the All-American Canal
  - Diverted at the Imperial Dam (north of Yuma)
- 123 miles long
- Construction began in 1930's and was interrupted by WWII
  - Work resumed in 1948
  - Completed in 1949

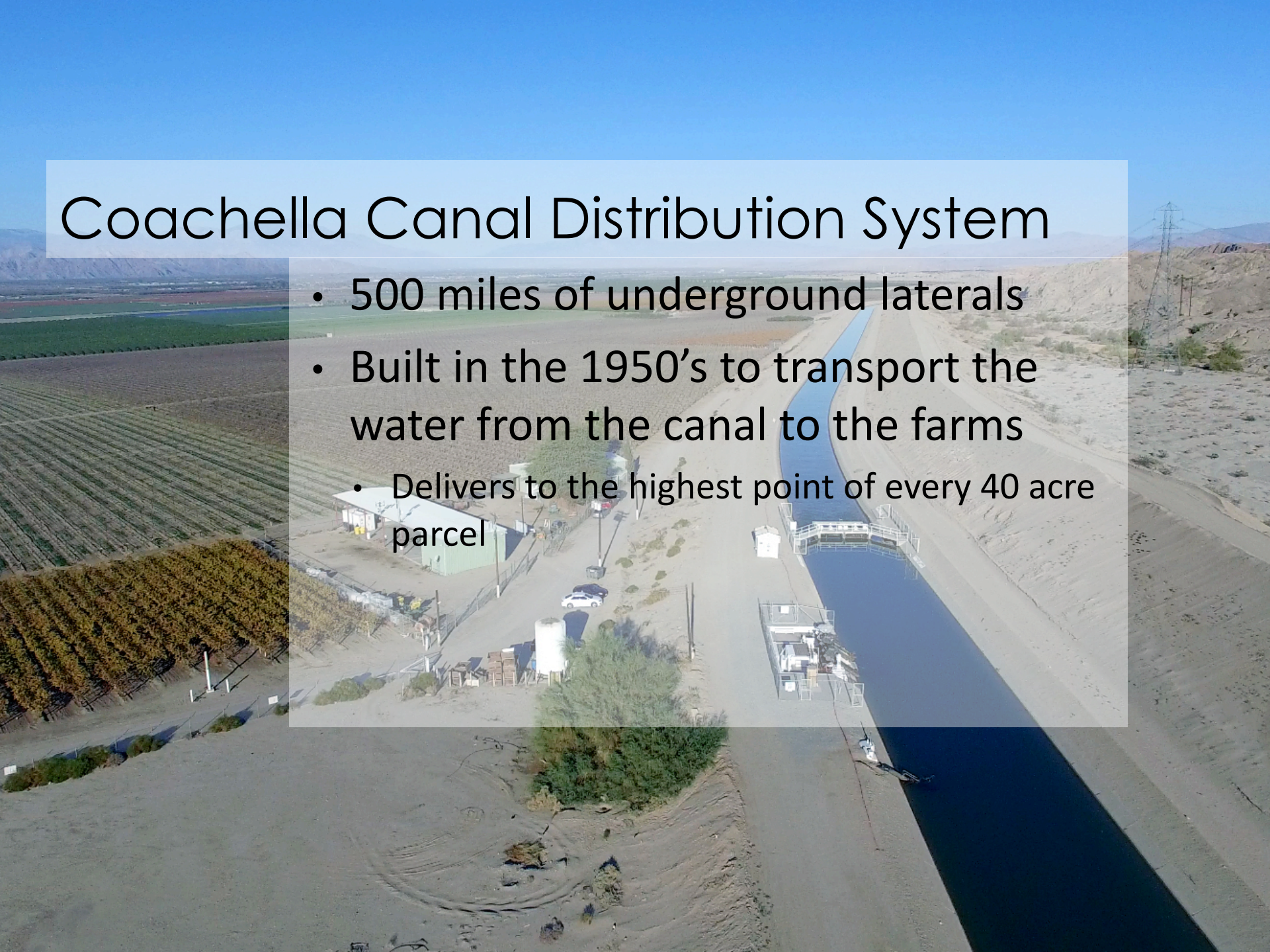
# Coachella Canal

- Has capacity for up the 1,300 cubic feet per second
  - Allows for 2,600 acre feet every 24 hours
  - Delivers about 250,000 acre feet of water a year



# Coachella Canal Distribution System

- 500 miles of underground laterals
- Built in the 1950's to transport the water from the canal to the farms
- Delivers to the highest point of every 40 acre parcel





# Coachella Canal Lining

- When built, the 37 most northern miles were lined
- By 1980, 49 southern miles were also lined.
- The remaining 36 miles were lined 2006
  - Partially funded by San Diego County Water Authority as part of the QSA
- Estimate 26,000 acre feet saved from seepage.



# Lake Cahuilla

- Greater control over the flow
  - Storage capacity to capture surpluses
  - Holds about 1,300 acre feet
- Riverside County operates the recreation uses
  - Fishing
  - Camping
  - Day use





# Agricultural Water Management Plan

- In 2015, the Agricultural Water Conservation Plan Update was approved by the United State Bureau of Reclamation.
- The Plan includes:
  - Description of District Operating Policies
  - Inventory of Water Resources
  - Water Conservation Measures and Results

# CV Water Management Plan

## **Water Management Plan**

- Working collaboratively with other water agencies to achieve a balanced basin.
- Making sure that supply meets demand.

## **Plan update in is the works, to be completed by January 2022 including:**

- Source substitution
- Conservation
- In lieu replenishment
- Goals for agricultural use

# How have we done it?

- More than 60% of area farms use drip or other micro-irrigation.
- Area farms are among the most efficient agricultural water users in the state.
- Agriculture is 100 percent metered.





# How have we done it?

- Lake Cahuilla
- Canal telemetry control
- Canal lining
- Support of California Irrigation Management Information System (CIMIS) Network
- Public education
- Agricultural Water Advisory Group
- Certified Crop Advisor and Certified Agricultural Water Manager on staff



# Questions?



## Your Water

is our promise

[cvwd.org/ourpromise](http://cvwd.org/ourpromise)

[publicinfo@cvwd.org](mailto:publicinfo@cvwd.org)

(760) 398-2651



Indio Water Authority  
Your Water. Our Responsibility.



CITY OF COACHELLA  
INCORPORATED 1946



DESERT WATER  